

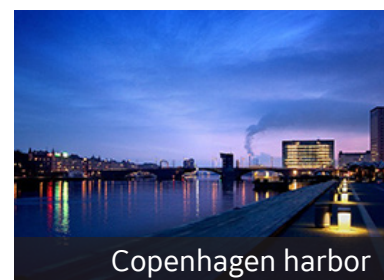
# Nordic PET/CT User Meeting

Copenhagen, November 13-14, 2017

## Agenda overview

### Monday, November 13

|                    |   |
|--------------------|---|
| 11:30-12:00        | Welcome and introduction at Bispebjerg Hospital (If you choose bus transportation the bus will depart from the hotel at 10:30)                              |
| <b>12:00-13:00</b> | <b>Lunch</b>  |
| 13:00-13:15        | Bispebjerg Hospital Presentation  |
| 13:15-17:00        | Presentations & sessions:<br>- Cyclotron & radiochemistry<br>- Radiotherapy<br>- Neurology<br>- First clinical experiences with Discovery™ MI – Digital PET |
| <b>19:00</b>       | <b>Dinner</b>   |



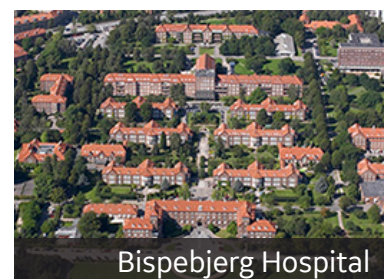
Copenhagen harbor



Bispebjerg Hospital

### Tuesday, November 14

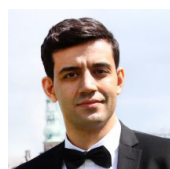
|                    |   |
|--------------------|---|
| 08:30-12:00        | Presentations & sessions:<br>- Cardiology<br>- Oncology<br>- Nordic Protocols |
| <b>12:00-13:00</b> | <b>Lunch</b>  |



Bispebjerg Hospital

## Participation, transportation & costs

Participation in the meeting, lunch and dinner are free of charge. We have arranged transportation between the hotel and hospital. You can book these when you sign up for the meeting (free of charge). Participants must pay for all other transportation and hotel.



Do you have questions or suggestions to the agenda, please contact:

Tarik Cengiz

Nordic Clinical Leader - MI, GE Healthcare

☎ + 46 725 551 405

✉ [tarik.cengiz@ge.com](mailto:tarik.cengiz@ge.com)

## Location

### Hotel Admiral

Toldbodgade 24-28  
1253 København K

### Bispebjerg Hospital

Bispebjerg Bakke 23  
2400 København NV