

## Organizing Committee

Per Tomani, RISE  
Birgit Backlund, RISE  
Eemeli Hytönen, VTT

## Contact and Information

The conference programme:  
Per Tomani  
Email: per.tomani@ri.se  
Phone: +46 (0)8 676 7281

Other:  
Birgit Backlund  
Email: nwbc2020@ri.se  
Phone: +46 (0)8 676 7226

For updated information about NWBC 2020,  
please visit:  
[www.ri.se/nwbc-2020](http://www.ri.se/nwbc-2020)

## RISE Research Institutes of Sweden

RISE is the Swedish Research Institute and innovation partner. In international collaboration with industry, academia and the public sector, we ensure the competitiveness of the business community and contribute to a sustainable society. Our 2 700 employees support and promote all manner of innovative processes. RISE is an independent, state-owned research institute that offers unique expertise and about 100 testbeds and demonstration facilities, instrumental in future-proofing technologies, products and services. [www.ri.se](http://www.ri.se)

*Nordic Wood Biorefinery Conference – the leading event where research and industry meet to discuss recent wood-based biorefinery developments*

NWBC is organized since 2008 by RISE Research Institutes of Sweden and VTT Technical Research Centre of Finland



# Welcome to

## The 9<sup>th</sup> Nordic Wood Biorefinery Conference

24-26 March 2020  
Stockholm, Sweden

The 9<sup>th</sup> Nordic Wood Biorefinery Conference will present the latest ideas and development in biorefinery separation and conversion processes, as well as new bio-based products from the wood biorefinery: materials chemicals and energy. NWBC gathers expert speakers from the chemical, energy and pulp & paper industry, as well as recognized representatives from the global research community. The last event in Helsinki, Finland in October 2018 gathered over 200 delegates from 26 countries; 81 from industry (pulp & paper, chemical, machine suppliers etc).

NWBC 2020 will cover new research results and industrial experience related to biorefineries based on wood and/or on pulp mills:

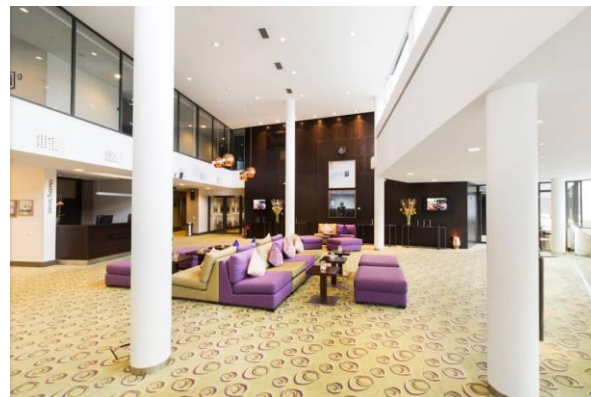
- Biorefinery systems and processes.
- Biorefinery products: chemicals, materials and fuels.
- Apart from technical/scientific subjects, economy and sustainability issues will also be addressed.

### Research student opportunity

The foundation Troëdsson Paper Engineering Travel Grant announces via RISE a scholarship for a postgraduate student who participates in NWBC 2020 with a presentation. The winner is appointed based on performance, the subject's assessed importance and quality. The scholarship applies for a 3-month stay at the RISE Bioeconomy division to work with your own research or participate in an R&D project within forest industry research and development within RISE Bioeconomy's business areas.

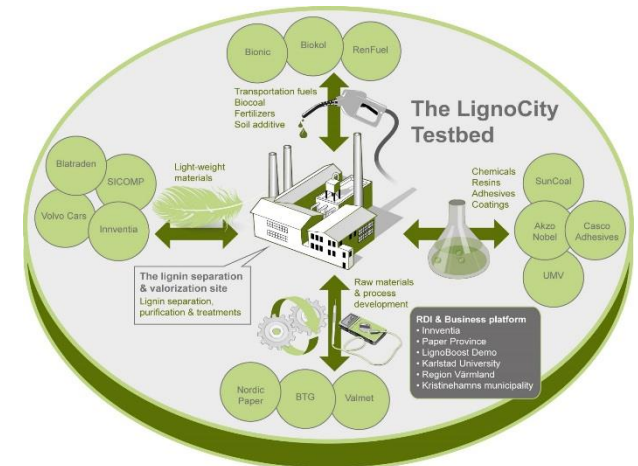
### Venue

Located on the island of Kungsholmen in the Stockholm city centre, Hotel Courtyard by Marriott is situated within walking distance to the city heart. You have the Rålambshov park and lake Mälaren across the street. Many public transportation options, including airport shuttle bus, are close by.



### Visit to LignoCity

An optional site visit is planned on March 27, 2020 to RISE's lignin plant in Bäckhammar. RISE LignoDemo can produce up to 8 000 t/y of high-quality kraft lignin as a source for biofuels, chemicals and materials. Updates from the LignoCity 2.0 project and RISE Bioeconomy Research Programme will be presented. Whole-day tour with bus trip from Stockholm.



### Evening Events

- Open house at RISE with lab tours  
23 March
- Conference dinner
- More to be announced